

SOUNDPORTER

AUDIO MASTERING

DDP Player Quick User Guide

Start DDP Player

Start the program **Soundporter_DDP_Player** where it was installed.

- a. In Windows, this may be on the Desktop, or by pressing the **Windows** key and typing **Soundporter**, followed by [Enter].
- b. In Mac OS, press **Command+Space**, and type **Soundporter**. Click **Soundporter_DDP_Player.app** in the resulting search.

This software is presented to you by Soundporter

Soundporter

SOUNDPORTER 
AUDIO MASTERING

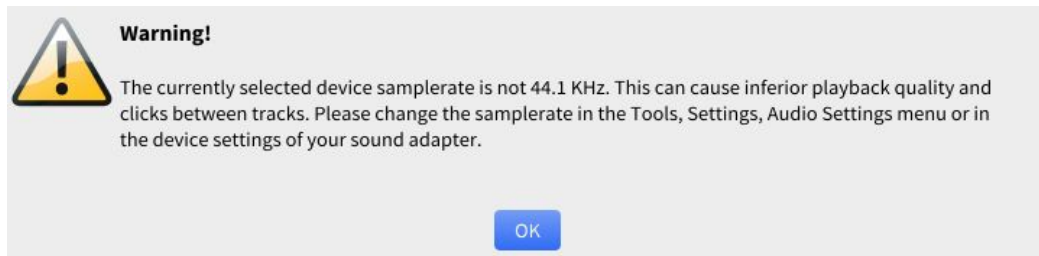


Continue

Click **Continue**.

Sample Rate Error (Windows)

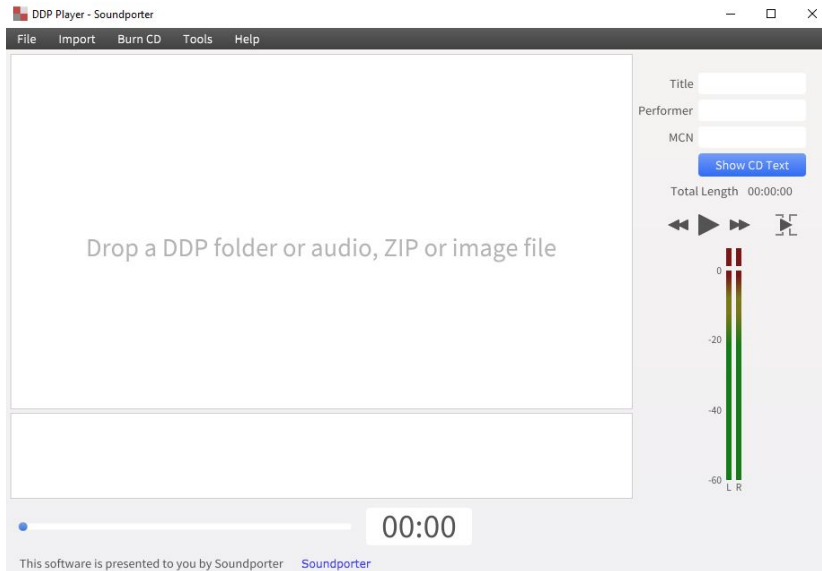
You may see a warning much like the following upon starting the DDP Player.



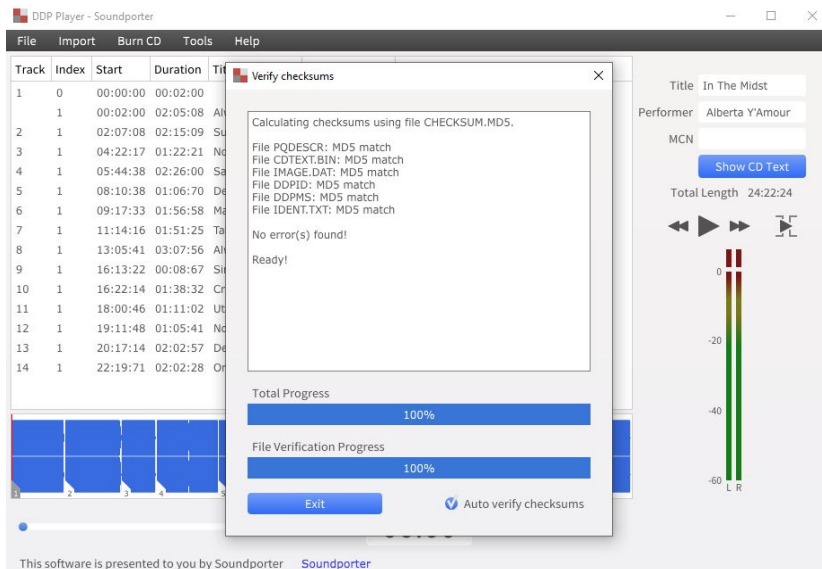
Your sound card driver has a setting that may be different than the sampling rate of the DDP image. While this does not stop you from playing back your DDP image, it can cause some very subtle low-level effect on quiet passages that may sound like clutter noise or a low-level scratchiness. Many ears may not notice it, but for the greatest accuracy, you should ensure your sound card settings are the same as the DDP image.

1. Open **Control Panel**, and navigate to **Hardware and Sound => Sound => Manage audio devices**.
2. In the **Playback** tab, select the currently used sound card interface you're using. Highlight it and click **Properties**.
3. Select the **Advanced** tab. In the **Default Format** selection pull-down box, select **2-channel, 16-bit, 44100 Hz (CD Quality)**. You may need to revert this setting after using the DDP Player. You may also click **Test**, to ensure you hear audio.
4. Click **OK**. Click **OK** again, and close Control Panel.

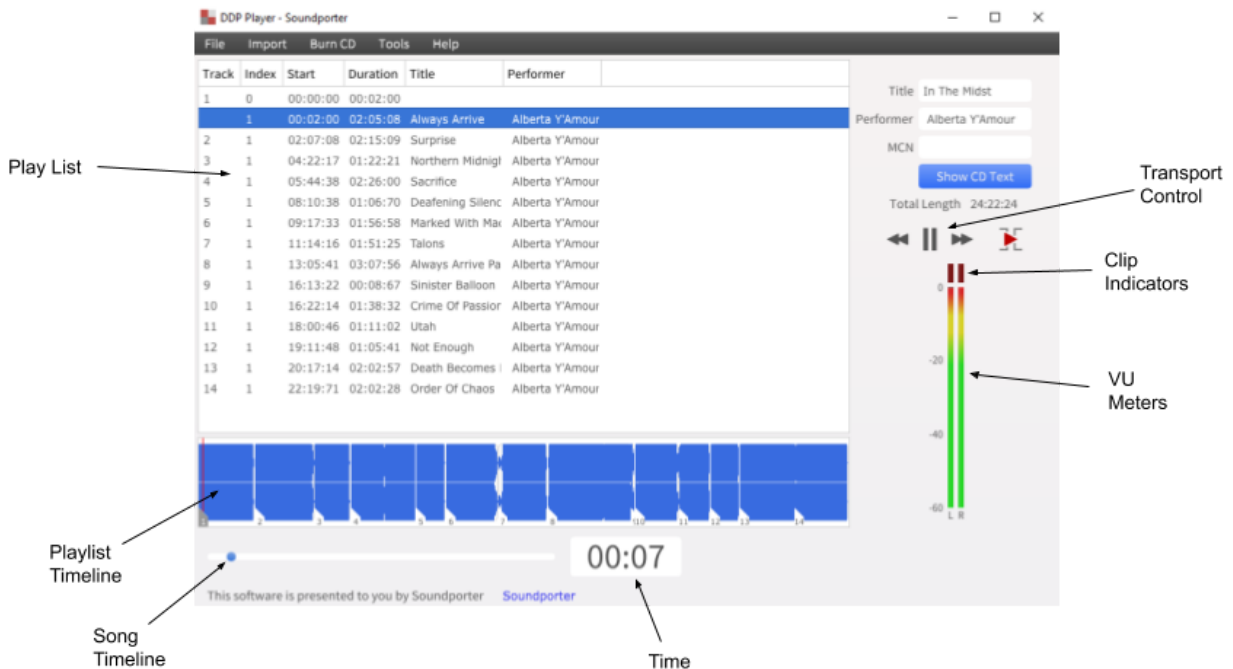
Import Your DDP Image



1. Locate your DDP folder and drag the *folder* into the DDP Player main window. You can also click **Import** and select **DDP Image**. Locate your DDP folder, highlight it and click **OK**.
2. You should see the import process as follows. Click **Exit** after you've verified the import is good.



Player Overview



Play List (Project Workspace) - The list of songs in the order they were constructed in the CD Montage. Here's your chance to catch any issues with song titles, track order, etc. You can also highlight the song you want to audition immediately.

Playlist Timeline (Waveform Display) - You can click in this area to swiftly move the playback location to anywhere on the CD.

Song Timeline (playback slider) - This slider allows you to more accurately see and adjust the exact playback location of the currently played song.

Time - The exact playback location

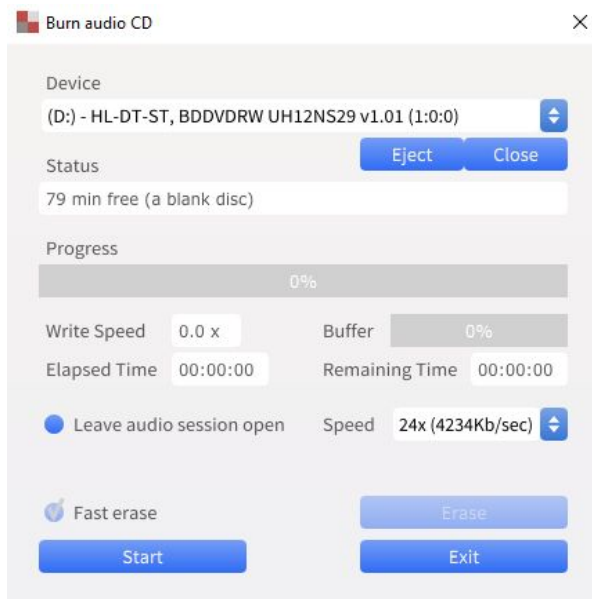
Transport Control - Play, Pause, skip back one song, move forward one song. You can also audition the transitions of tracks here.

VU Meters - Shows peak loudness of the audio

Clip Indicators - Typically you should never see these light up. In this playback scenario of a master, any clip indication needs to be reported.

Burn a CD of your image

1. While the DDP image is loaded into the player, insert a blank CD into your CD Burner.
2. Under **Burn CD**, select **Audio CD**.



3. Ensure **Speed** is set to 24x or slower. Click **Start** to begin the CD burn.

